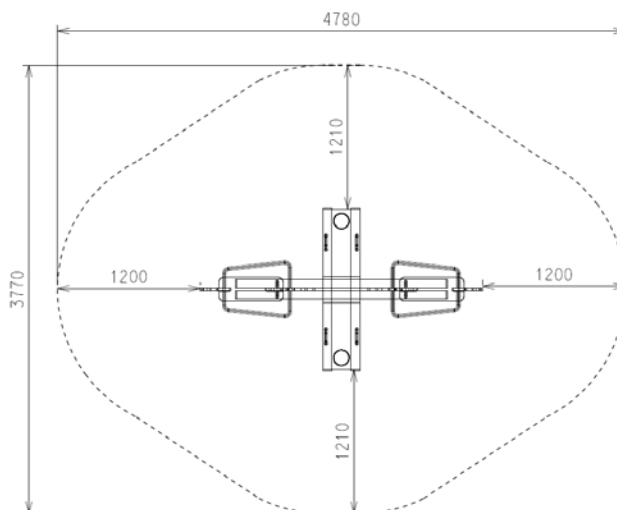
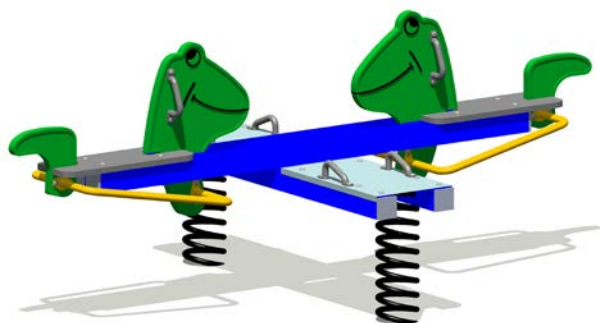




MULTI ROCKER

SPECIFICATION SHEET



FALL ZONES

Area: 3.77M x 4.78m (18.02m²) | FHO: 0.75m | Equip Size: 2.38m x 1.37m | Max Height: 1.0m

| | |
|-------------------------------|---|
| PRODUCT CODE | SE07 |
| COLOURS | Frame: Standard Powder Coat Range Seat: Standard Powder Coat Range Beam: Standard Powder Coat Range |
| MATERIAL SPECIFICATION | Frame: Cast Aluminium Seat: Cast Aluminium Beam: Galvanised Steel Fasteners: Steel & Stainless Steel Powder Coating: 80-120μ Spring: Steel |
| AGE GROUP | All Ages |
| PLAYSPACES | Parks, Schools, Commercial |



[DOWNLOAD DESIGN FILES HERE](#)



OTHER INFORMATION

Spare Parts: Available | Warranty: 20 years | Quality Assurance: Yes | Insurance: Yes
Installation: Refer manual

STANDARDS

Complies with relevant Australian Standards including:

• AS 4685:2014 (P 1-6) | • AS 4685.0:2017 | • AS/NZS 4422: 2016

*All information is commercial in confidence and is the property of Forpark Australia. All information in correct as at September 2017.

*For details regarding Australian Standards, Warranties, Insurances, QA and Installation please contact your local office.

www.forparkaust.com.au

